





# Costa Mesa Sanitary District

...an Independent Special District

## Memorandum

**To:** Board of Directors

**Via:** Scott Carroll, General Manager 

**From:** Elizabeth Pham, Management Analyst II 

**Date:** April 28, 2016

**Subject:** Art Wraps for Wastewater Pump Station Control Panels

---

### Summary

The Board of Directors directed staff to create an ad hoc committee to oversee the Pump Station Electrical Control Panel Art Wraps Pilot Program. The program's purpose is to enhance the appearance of the District's electrical control panels at wastewater pump stations utilizing art wraps.

### Staff Recommendation

That the Board of Directors approves the recommendation from the ad hoc committee and appropriate \$7,300 from the Wastewater Contingency Fund to support this program.

### Analysis

The ad hoc committee reviewed and selected 8 pump stations to place customized art vinyl wraps on. These locations were selected on visibility. The committee determined that the artwork should be historically significant to each location (Attachment A). Artwork would be solicited by artists from local schools (high schools and colleges) in Costa Mesa and promoted through social media. Staff will promote the contest during Fall semester to allow instructors enough time to engage participation from students. Artwork would be selected by committee members and the artist would receive an honorarium of \$100.

### Strategic Plan Element & Goal

This item complies with Strategic Element 3.0., *Partnerships*, and Strategic Goal No. 3.2, *Strengthen our ties with local governments, special districts and educational institutions.*



Protecting our community's health and the environment by providing solid waste and sewer collection services.

[www.cmsdca.gov](http://www.cmsdca.gov)

**Legal Review**

Not applicable.

**Environmental Review**

Placing a wrap on the electrical enclosure at a pump station is not only a beautification program but the wrap provides protection for the surface and diminishes the chances of graffiti and can be considered a maintenance activity, which is categorically exempt under the California Environmental Quality Act (CEQA) (Public Resources Code Section 21000 et. seq.). Section 15300.4 of CEQA allows an agency while establishing its own procedures "to list those specific activities which fall within each of the exempt classes", and the District has adopted "CEQA Guidelines and Implementing Procedures" that state on page 6 "Projects" does not include .... C. Continuing administrative or maintenance activities."

**Financial Review**

The cost for the art wraps is \$6,500. The cost is contingent upon the panel size and customization. In addition, an honorarium of \$800 will need to be allocated to award each artist. The total cost of the project is \$7,300. Funds will be transferred from the Wastewater Contingency to support this project.

**Public Notice Process**

Copies of this report are on file and will be included with the entire agenda packet for the April 28, 2016 Board of Directors meeting at District headquarters and on District's website.

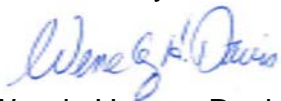
**Alternative Actions**

1. Direct staff to report back with more information.

Attachments A: List of District Pump Stations

B: Estimate for Art Wraps

Reviewed by:



Wendy Hooper Davis  
Finance Manager

## Costa Mesa Sanitary District Pump Station –Art Vinyl Wrap Project

Historical significance of each location:

1. Gisler Pump Station—3003 Iowa St., Costa Mesa  
Adobes



2. Iowa Pump Station—1601 Iowa St., Costa Mesa  
Railroad (Harbor)



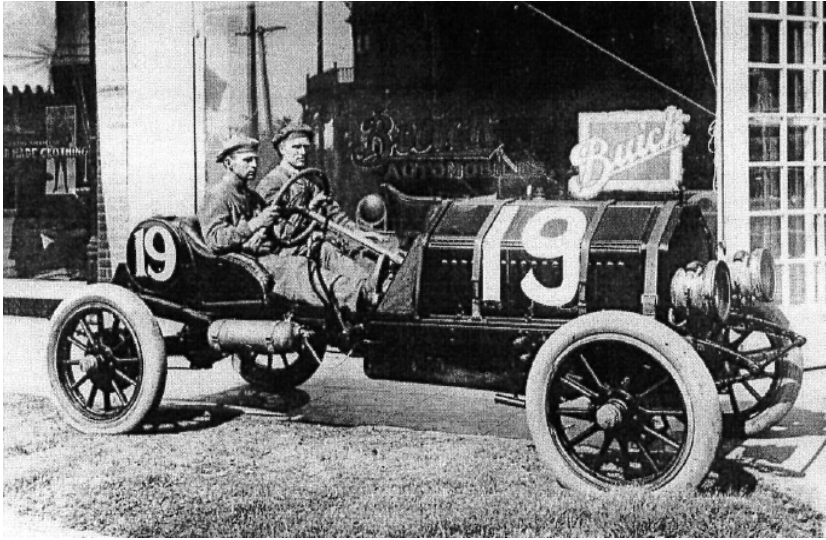
3. Adams Pump Station—2054 Adams Ave., Costa Mesa  
Adobe de Sepulveda



4. Valley (Aviemo) Pump Station—1140 Aviemo Terrace, Costa Mesa  
Marina/Harbor Theme



5. City Corporation Pump Station—3003 Placentia St., Costa Mesa
6. Santa Ana Pump Station—2449 Santa Ana Ave., Costa Mesa  
Apple Orchards
7. Irvine Pump Station—2677 Irvine Ave., Costa Mesa  
Ellis Brothers & the Great Race



8. 21<sup>st</sup> Pump Station—21<sup>st</sup> & Newport Ave., Costa Mesa  
Downtown





Mesa Art & Framing  
789 W. 19th St.  
Costa Mesa, CA 92627

Quote Sheet

Date: 04/03/16

Phone#

E-Mail:

Estimate for: CMSD,

Payment Terms:

Reference:

Vinyl Wraps

Atn: Steve Cano

Address:

Item	Description	Quantity	Cost	Total
1	2054 Adams P.S.	1.00	\$540.00	\$540.00
2	1140 Avimor Terrace	1.00	\$1,368.00	\$1,368.00
3	2300 Placentia Ave. P.S.	1.00	\$720.00	\$720.00
4	3003 Iowa Gisler P.S.	1.00	\$514.00	\$514.00
5	1601 Iowa P.S.	1.00	\$541.00	\$541.00
6	Santa Ana P.S	1.00	\$362.00	\$362.00
7	Irvine P.S.	1.00	\$884.00	\$884.00
8	11421 21st. St. P.S.	1.00	\$1,085.00	\$1,085.00
				\$0.00
				\$0.00
				\$0.00
				\$0.00
				\$0.00
				\$0.00
				\$0.00
				\$0.00
				\$0.00
				\$0.00
				\$0.00
				\$0.00
				\$0.00

8.00

Received By:

Sub-Total:	\$6,014.00
Sales Tax 8:	\$481.11
Shipping	
Other	
Total:	\$6,495.11
	\$6,495.11